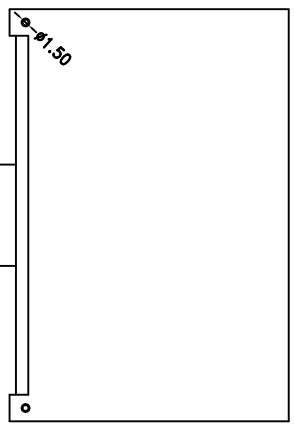
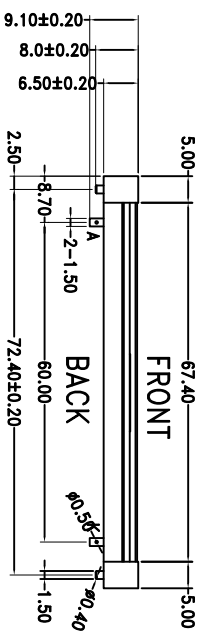
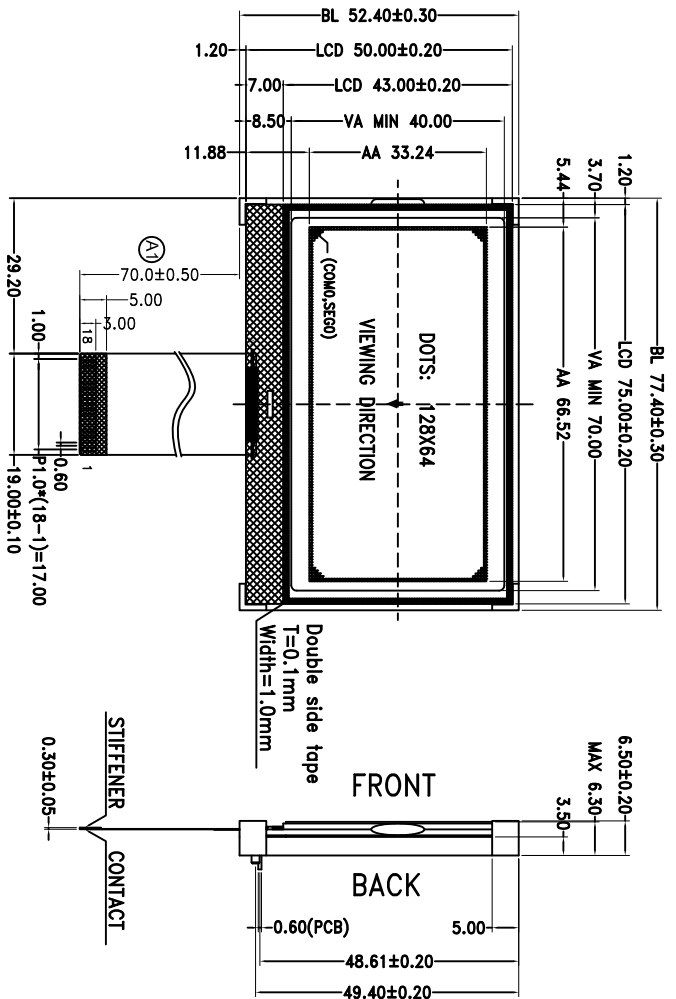
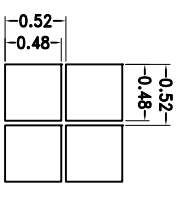
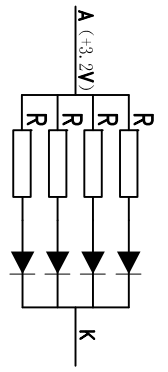
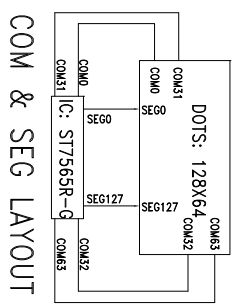


Signature: _____ Date: _____

REV.	DESCRIPTION	REVISER	DATE
A0	新出图	luojinwei	2014/12/15
A1	改FPC长度	luojinwei	2015/06/27



PIN	SYMBOL	PIN	SYMBOL
1	CS1	11	C1P
2	RES	12	C2P
3	A0	13	C2N
4	D6(SCLK)	14	V4
5	D7(SDA)	15	V3
6	VDD	16	V2
7	GND	17	V1
8	VOUT	18	V0
9	C3P		
10	C1N		



Specifications:

1. Display Mode: FSTN/Black-White/Transmissive/Positive.
2. Viewing Angle: 12 0'clock.
3. Drive Method: 1/65 Duty 1/9 Bias, Vop=9.0V, Vdd=3.0V.
4. Top: -20°C~+70°C, Tst: -20°C~+70°C.
5. Connector: COG+FPIC.
6. Backlight: 1*4 PCS WHITE LED Side Backlight; If=60mA & Vf=3.2±0.2V.
 X=0.260~0.32, Y=0.260~0.32.
 Luminance: >100cd/m2(Backlight Surface).Uniformity: >80%.
7. Drive IC: ST7565R-G (COG)
8. RoHS Compliant: Yes.
9. With " * " Mark Dimensions Are Important Dimensions.

LUMMAX ELECTRONICS CO., LTD

Unspecified Tolerance:	±0.20	UNITS: mm	DATE:	MODEL NUMBER:	PROJECTION	SHEET:	DATE:
DESIGN BY:	luojinwei	2015/06/27	HFG12864+170-PTUSW-R_A1	DO NOT SCALE THIS DRAWING.	1 OF 1	2015/06/27	
CHECKED BY:							