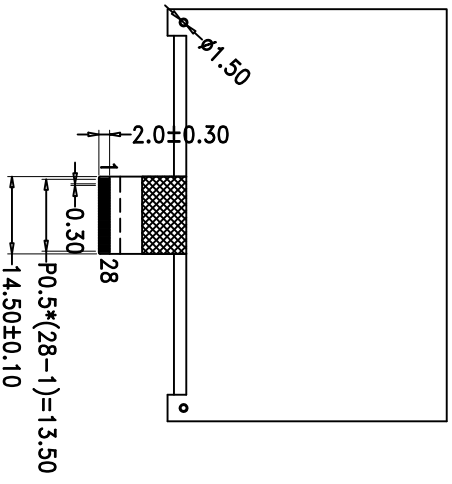
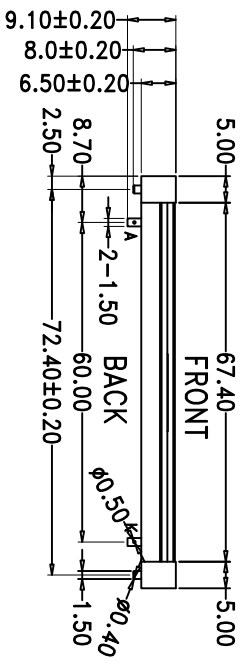
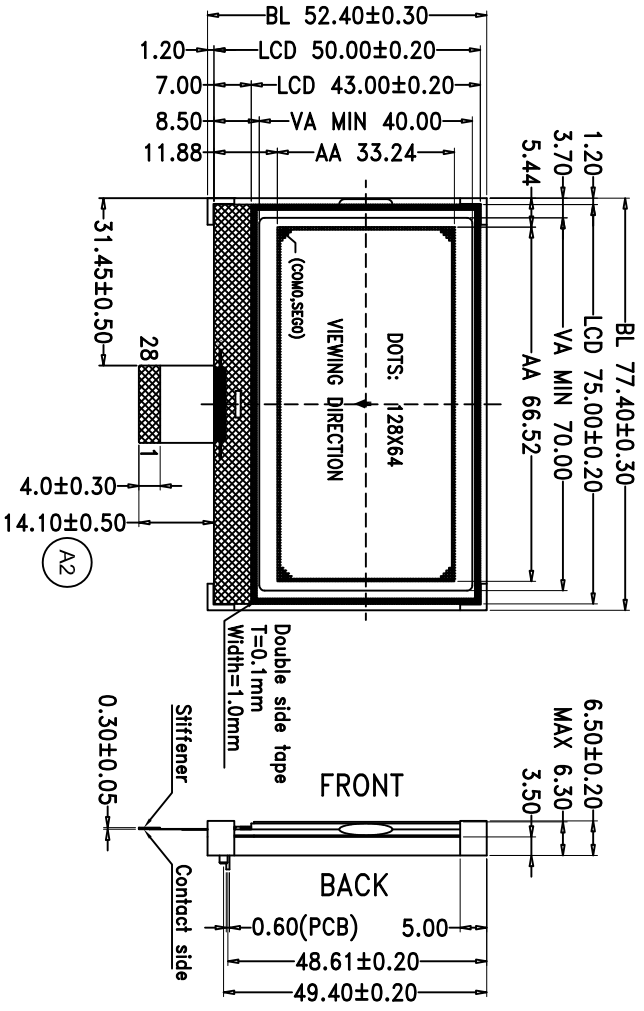
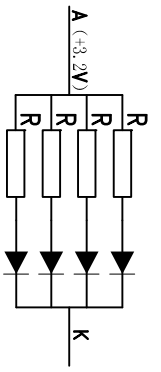


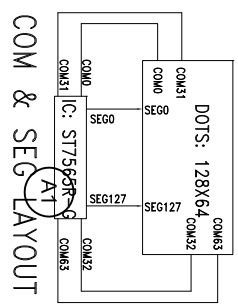
A0	新出图	luojinwei	2012/10/31
A1	根据客户要求更改IC型号	luojinwei	2012/11/10/3



PIN	SYMBOL	PIN	SYMBOL
1	/CS1	15	VSS
2	/RES	16	VOUT
3	A0	17	CAP3P
4	/WR(R/W)	18	CAP1N
5	/RD(E)	19	CAP1P
6	D0	20	CAP2P
7	D1	21	CAP2N
8	D2	22	V4
9	D3	23	V3
10	D4	24	V2
11	D5	25	V1
12	D6	26	V0
13	D7	27	C86
14	VDD	28	P/S



BACKLIGHT CIRCUIT SCALE:20:1



COM & SEG LAYOUT

由 Autodesk 教育版产品制作

由 Autodesk 教育版产品制作

Specifications:

1. Display Mode: FSTN/Black-White/Transflective/Positive.
2. Viewing Angle: 12 0'clock.
3. Drive Method: 1/65 Duty 1/9 Bias, Vop=9.0V, Vdd=3.0V.
4. Top: -20°C~+70°C, Tst: -20°C~+70°C.
5. Connector: COG+FPIC.
6. Backlight: 1*4 PCS WHITE LED Side Backlight; If=60mA & Vf=3.2±0.2V.
X=0.260~0.32, Y=0.260~0.32.
Luminance: >100cd/m2(Backlight Surface).Uniformity: >80%.
7. Drive IC: ST7565R-G (COG) (A1)
8. RoHS Compliant: Yes.
9. With " * " Mark Dimensions Are Important Dimensions.

LUMMAX ELECTRONICS CO., LTD

Unspecified Tolerance:	±0.20	UNITS: mm	DATE:	MODEL NUMBER:	SHEET:
DESIGN BY:	luojinwei	2012/10/31	HF12864-54-PFUSW-R_A2	PROJECTION	1 Of 1
CHECKED BY:			DO NOT SCALE THIS DRAWING.	DATE:	2012/10/31