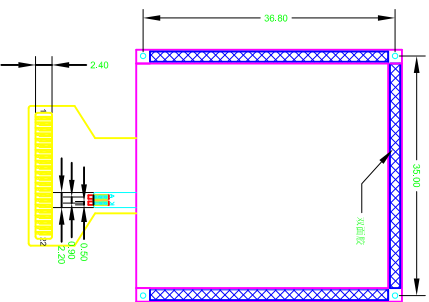
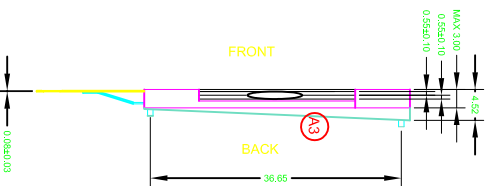
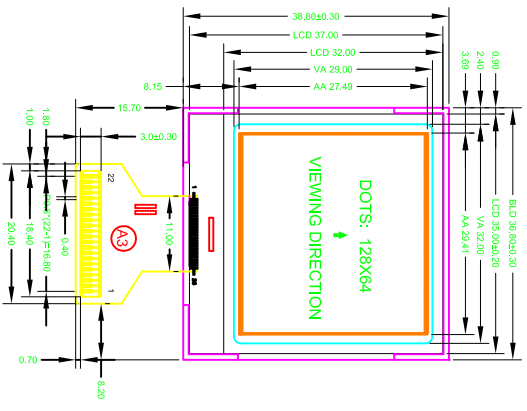


All Pages Of This Edition Approved
Signature: _____ Date: _____

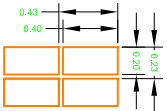
REV.	DESCRIPTION	REVISER	DATE
A0	新出图	luojinwei	2011/7/29
A1	改背光结构	luojinwei	2011/7/29
A2	改FPC的结构和背光结构	luojinwei	2011/10/17
A3	改FPC为侧空构,背光的结构	luojinwei	2012/6/6
A4	改C和接口VOP	luojinwei	2013/7/30



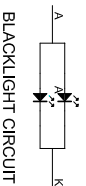
COM & SEG LAYOUT



PIN	SYMBOL
1	CS1
2	RST
3	A0
4	D6(SCK)
5	D7(SDA)
6	VDD
7	VSS
8	NC
9	NC
10	V0
11	XV0
12	NC
13	NC
14	NC
15	NC
16	NC
17	NC
18	VG
19	NC
20	NC
21	A
22	K



SCALE: 20: 1



BACKLIGHT CIRCUIT

LUMMAX ELECTRONICS CO., LTD

Model Number: HSG12864-20-YTDSV-R_A4

UNSPECIFIED TOLERANCE:	±0.20	UMTS: mm	DATE:	2011/7/29
DESIGN BY:	luojinwei	MODEL NUMBER:	HSG12864-20-YTDSV-R_A4	
CHECKED BY:		PROJECTION:		SHEET: 1 OF 1
APPROVED BY:		DO NOT SCALE THIS DRAWING.		DATE: 2011/7/29

- Specifications:
1. Display Mode: STN/Yellow-Green/Transmissive/Positive.
 2. Viewing Angle: 6.0'clock.
 3. Drive Method: 1/65 Duty 1/9 Bias, Vop=12.4V, Vdd= 3.0V. (A4)
 4. Top: -10°C~+60°C, Tst: -20°C~+70°C.
 5. Connector: COG+FPC.
 6. Backlight: 1*2 PCS Green LED Side Backlight. If=30mA & Vf=3.0±0.2V. Wavelength: 570~575nm; Luminance:>60cd/m2(Backlight Surface);Uniformity: >70%.
 7. Drive IC: ST7567 (A4)
 8. RoHS Compliant: Yes.
 9. With: * * Mark Dimensions Are Important Dimensions.