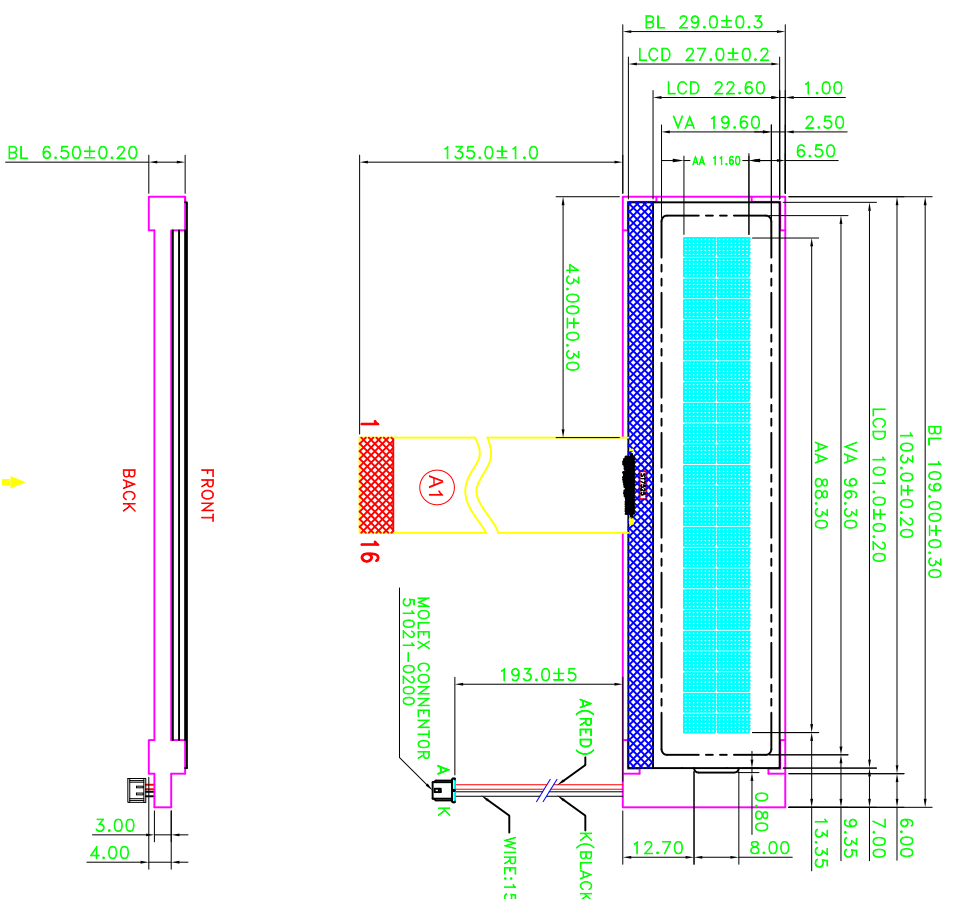
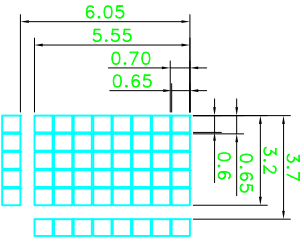


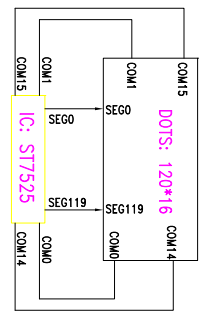
REV.	DESCRIPTION	REVISER	DATE
A0	新出图	Luojinwei	2013.08.06



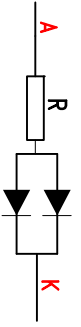
VIEWING DIRECTION



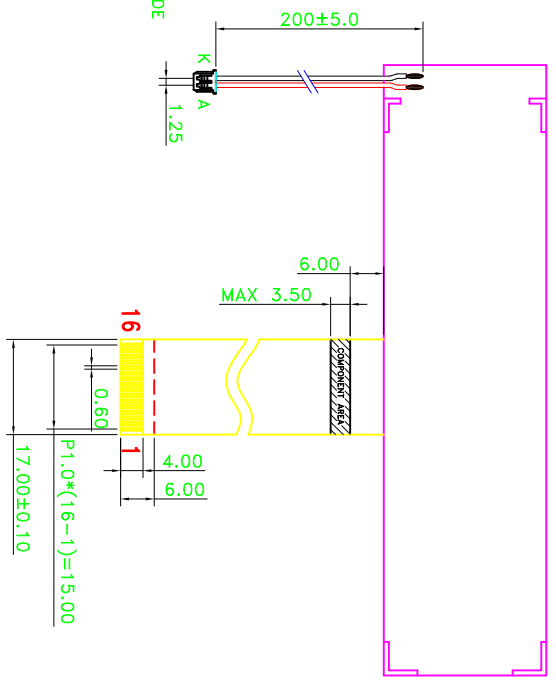
DOTS SIDE SCALE 10:1



COM & SEG LAYOUT



BLACKLIGHT CIRCUIT



PIN	SYMBOL
1	VSS
2	VDD
3	/CS
4	A0
5	RWR
6	ERD
7	DB0
8	DB1
9	DB2
10	DB3
11	DB4
12	DB5
13	DB6
14	DB7
15	RSTB
16	NC

- Specifications:
- Display Mode: FSTN/Black_White, Transflective/Positive.
 - Viewing Angle: 6 0'clock.
 - Drive Method: 1/33 Duty 1/6 Bias, Vop = 7.0V, Vdd = 3.3V.
 - Top: -20°C~+70°C, Tst: -30°C~+80°C.
 - Connector: COG+FP.
 - Drive IC: ST7525(8080 INTERFACE) --NOTE
 - Backlight: 2 PCS WHITE LED Blacklight, If=30mA & Vf=3.3±0.2V
- CHROMATICITY COORDINATES: X=0.24~0.30, Y=0.24~0.30
Wavelength: NO, Luminance: 20 cd/m2(WHWH LCD), Uniformity: 70%
- RoHS Compliant: Yes.
 - With " * " Mark Dimensions Are Important Dimensions.

LUMMAX ELECTRONICS CO.,LTD

Unspecified Tolerance: ±0.20	UNITS: mm	DATE: 2013.08.06	MODEL NUMBER: HFG2402-00-PFUSW-R_A0	SHEET: 1 OF 1
DESIGN BY: luojinwei	CHECKED BY:	DATE: 2013.08.06	PROJECTION	DATE: 2013.08.06