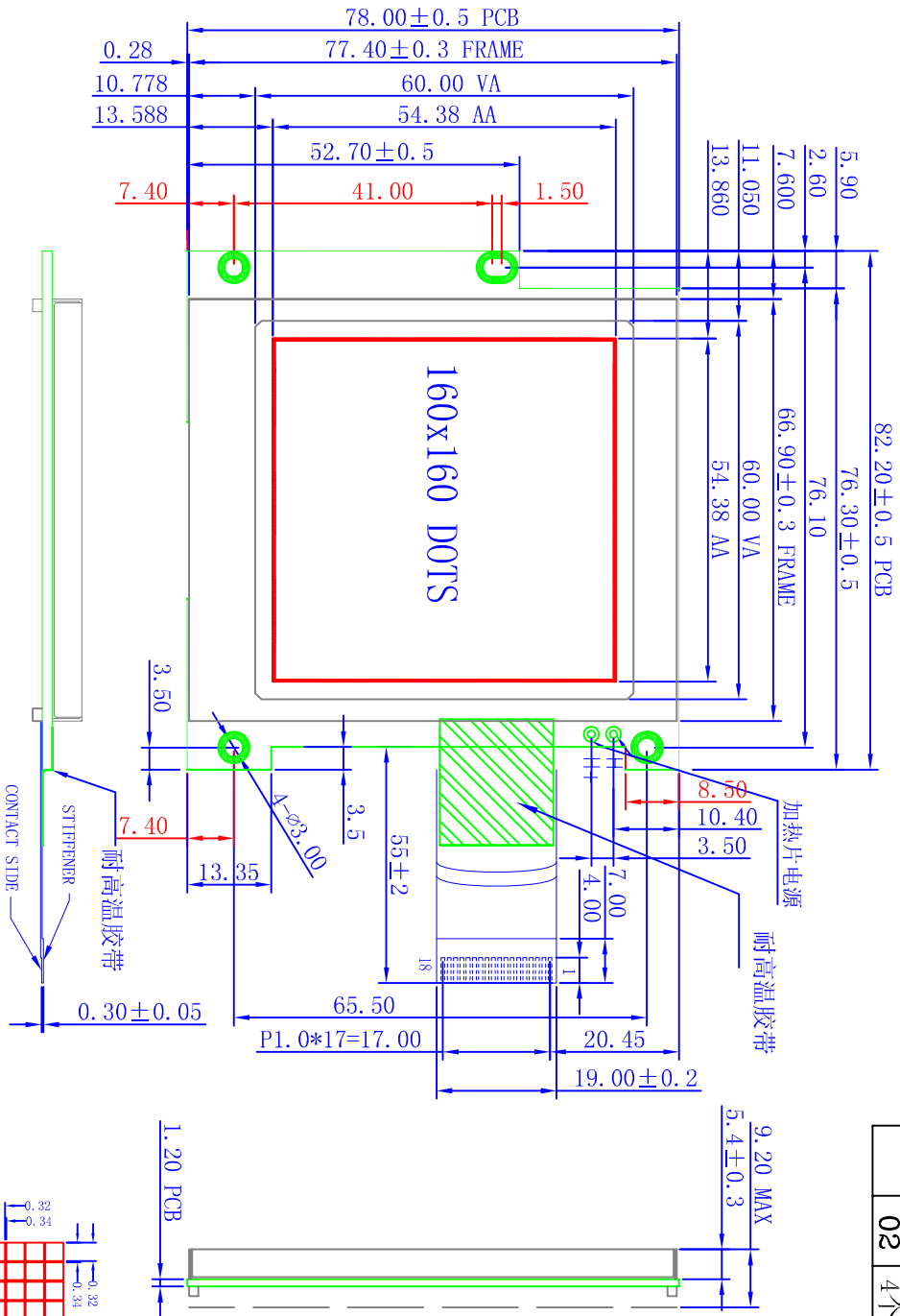


SYM	REV	DESCRIPTION	DATE
	01	First issue	Feb-27-2013
	02	4个定位孔位置下移2mm	Feb-24-2014

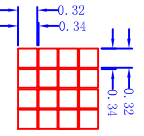


**NOTE:**

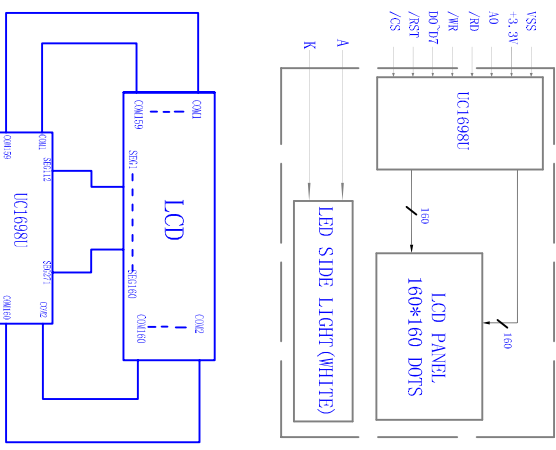
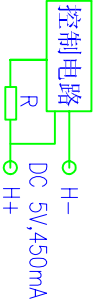
1. OPERATING TEMPERATURE:-40°C TD 80°C  
STORAGE TEMPERATURE:-40°C TD 85°C
2. LCD MODEL:STN/POSITIVE/TRANSPARENT
3. 1/160 DUTY,1/10 BAIS,VLCD=16.5V,VDD=3.3V
4. VIEWING ANGLE: 6:00 D'CLOCK
5. BACKLIGHT:WHITE LED  
VLED=4.7±0.2V ILED<90mA
6. ROHS COMPLIANT

1	2	3	4	5	6	7	8	9	10	11	12	13	14	15	16	17	18
GND	A0	/WR	/RD	/CS	/RST	+3.3V	DB0	DB1	DB2	DB3	DB4	DB5	DB6	DB7	K	NC	A

**DETAIL DOTS**



**加热线电路 (R为加热线)**



<b>TITLE:</b>	CD		LUMMAX ELECTRONICS CO., LIMITED
<b>Draw:</b>	XQC	<b>MODEL:</b>	HEM160160-09A8
<b>Chk:</b>		<b>UNIT:</b>	mm
<b>Appr:</b>		<b>SCALE:</b>	
		<b>GENERAL TOL:</b>	±0.2
		<b>SHEET NO:</b>	1/1