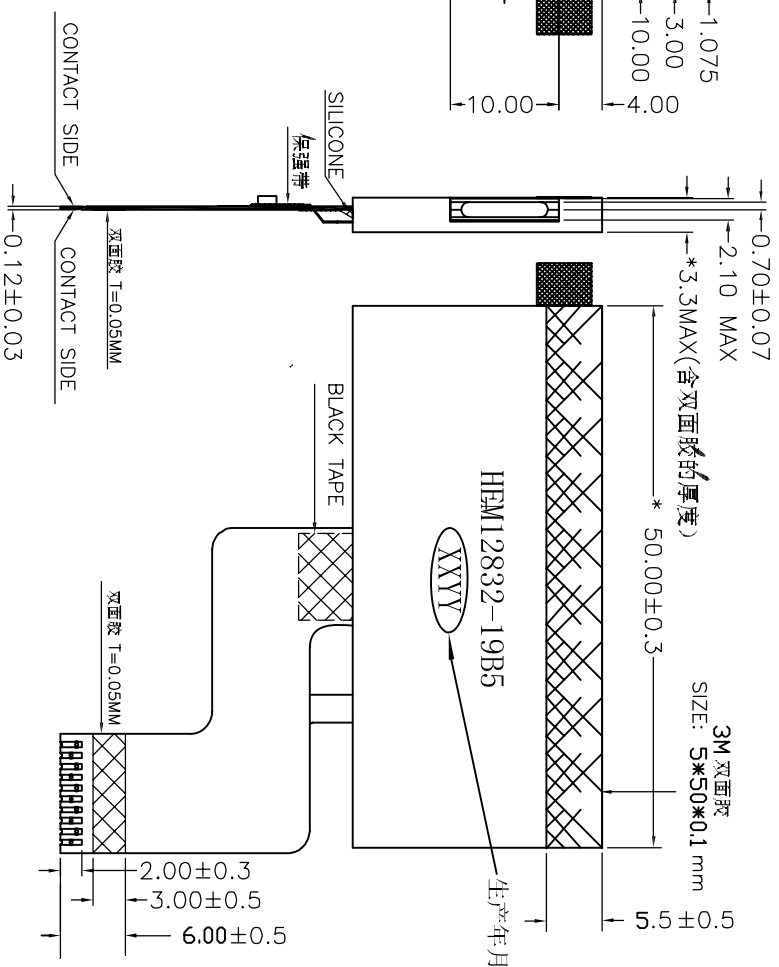
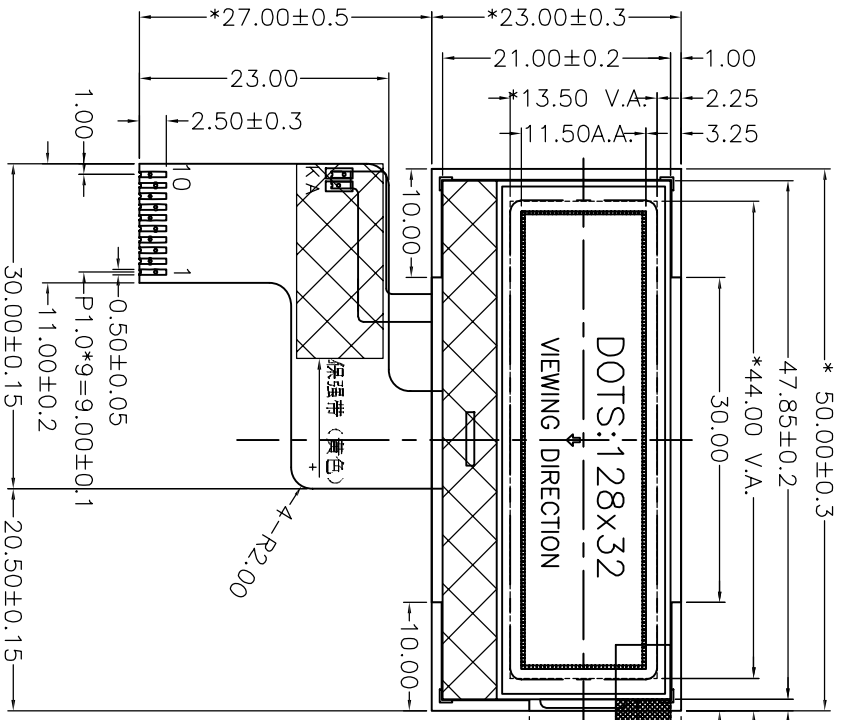


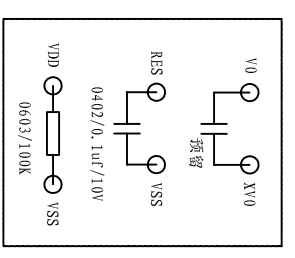
SYM	REV	DESCRIPTION	DATE
	01	First issue	Dec-03-2015
	02	更改双面胶位置	Jan-19-2016



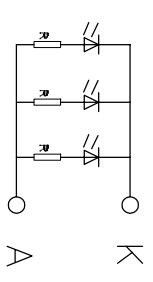
fpc pin def.

PIN	NAME
1	CS1
2	RES
3	AO
4	SCK
5	SDA
6	VDD
7	VSS
8	VG
9	A
10	K

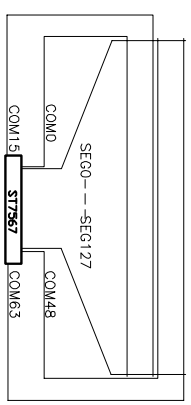
VSS 1uF



此电路在fpc上

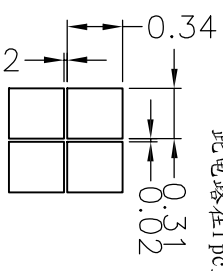


BACK LIGHT CIRCUIT



LCD上设计静电环并且接VSS

DOTS SIZE



- Specifications:
1. Display Mode: FSTN/TRANSMISSIVE/Positive/CUT-UV.
  2. Viewing Angle: 12 0'clock.
  3. Drive Method: 1/33 Duty, 1/6 Bias, Vop=6.5V, Vdd=3.3±0.2V.
  4. Top: -10°C~+60°C, Tst: -20°C~+70°C.
  5. Connector: COG+FPIC.
  7. Drive IC: ST7567
  8. BL: WHITE, 3 DIES, VBL=3.3V, IF≤90mA
  8. RoHS Compliant: Yes.
  9. Mark with "\*" is very important dimension.
  10. Interface: Serial interface.
  11. contrast: Software adjust contrast.
  12. UNMARK TOLERANCE IS: ±0.2mm

TITLE:	CD		
Draw:	XQC	MODEL:	HEM12832-19B5
CHK:		UNIT:	mm
Appv:		SCALE:	
LUMIMAX ELECTRONICS CO., LIMITED		DWG NO: C-02	
		GENERAL TOL: ±0.2	
		SHEET NO: 1/1	